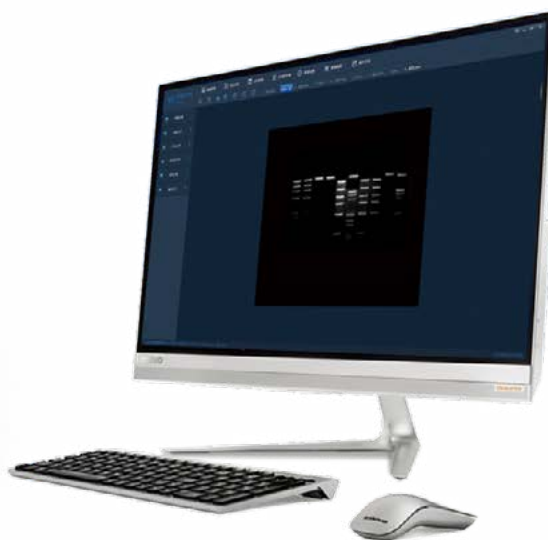
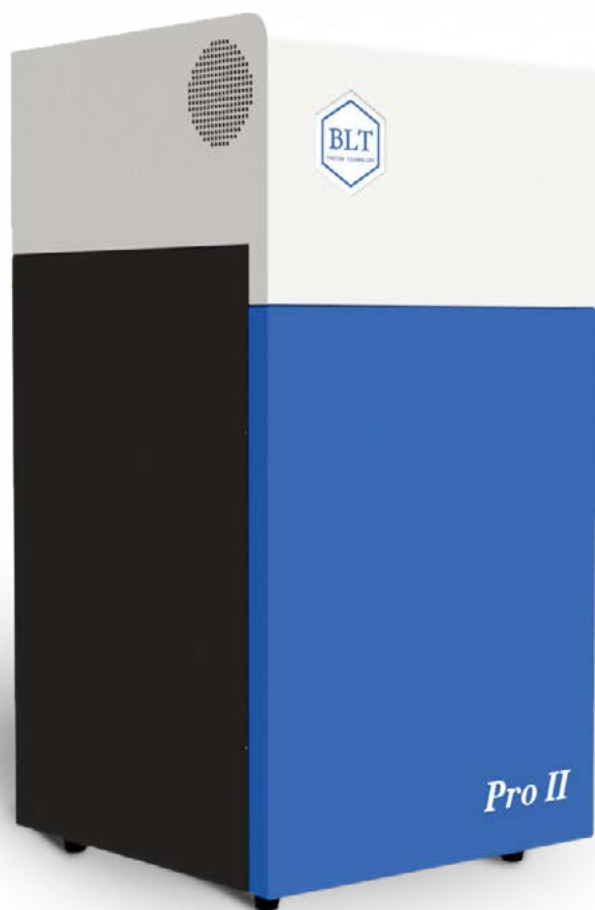


GelView 5000Pro II

Automatic Gel Imaging System



FEATURES

Ultra-Clear

The GelView 5000Pro II is a fully automated, easy-to-use gel imaging system with a 6 megapixel high-resolution, low-light digital camera that enables imaging of agarose gels, protein Coomassie brilliant blue, Petri dishes and other samples.

Multi-function

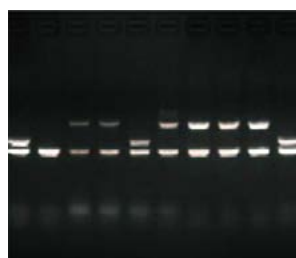
Equipped with Epi-white light, Epi-blue light, and UV transmission light sources, compatible with more sample imaging. An optional blue transmission light source is also available, which can be switched with the UV transmission light source and used independently as a gel cutter. Free switching enables multiple functions in one machine.

Intelligentize

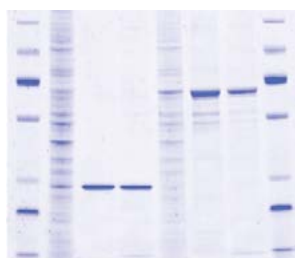
The breathing light can dynamically indicate the instrument's operating status by adjusting its pulse frequency and color. Pressure sensor switch will automatically turn-on UV/blue light when gel cutting protective plate plug in, gel cutting protective plate can filter 99.9% UV/blue light, which make gel cutting safer and easier.

User-friendly

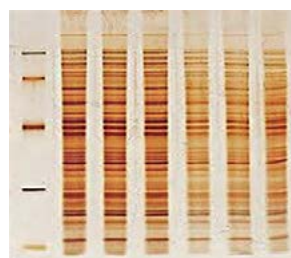
Equipped with user-friendly imaging and analysis software for effortless operation and easy imaging. The powerful analysis software enables seamless image processing, band analysis, grayscale measurement, colony counting, microplate analysis, and more—all with the ability to export detailed data.



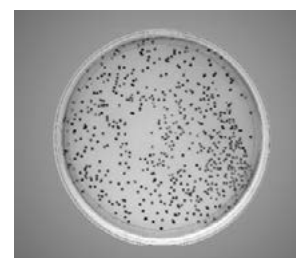
DNA-EB



Coomassie blue staining



Silver stain



Colony count

PARAMETER

Camera	High resolution digital camera	Light Source	Epi-white LED light, Epi-blue LED light
Resolution	3072×2048		306nm transmission UV
Pixel Size	2.2 μm×2.2 μm		470nm transmissive blue light (optional)
Lens	2/3" large aperture high-definition lens	Filter	590nm
Dynamic Range	>3.4 OD	Case Size	720 mm×370 mm×370 mm (H×W×D)
Imaging Field of View	21cm×18cm	Instrument Weight	35kg